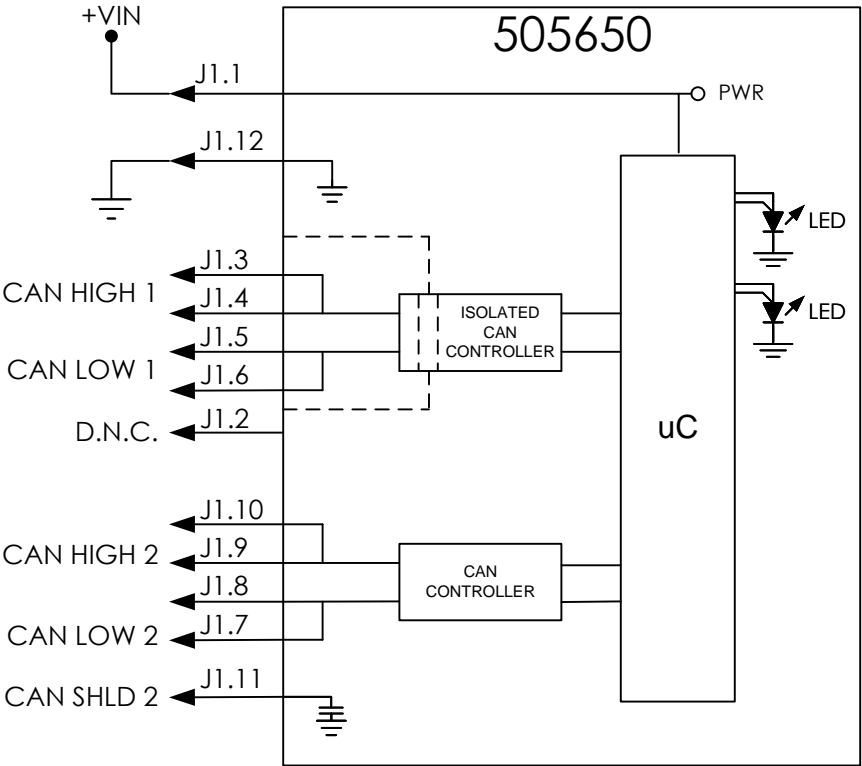
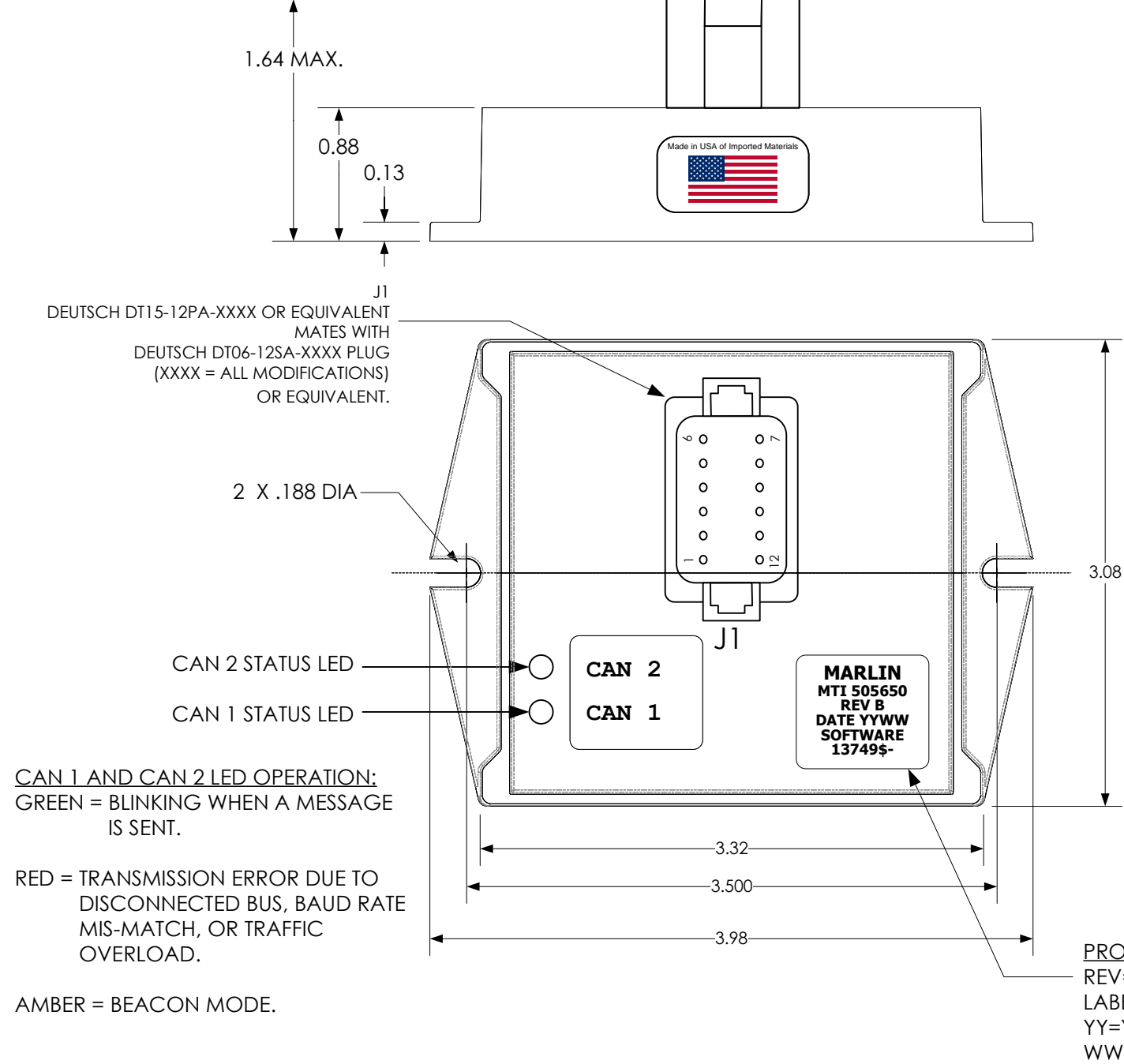


REVISIONS				
REV	DATE	ECN	DESCRIPTION	APVD
A	07/14/21	13741E	RELEASE TO PRODUCTION	JC
B	11/22/22	14404E	UPDATE 5V POWER SUPPLY	JC



OPERATING VOLTAGE: +9VDC TO +36VDC (+12VDC OR 24VDC NOMINAL).
REFERENCE FUNCTIONAL SPECIFICATION: 14065S_
REFERENCE CONFIGURATION SPECIFICATION: 14066S_
REFERENCE USER GUIDE: 14067U_
CANBUS PROTOCOL: SAE J1939/ISO 11783, 250KBS/500KBS/1MBS
505650 SOURCE ADDRESS: 0x99 (DEFAULT)
TERMINATION: NONE

UNLESS OTHERWISE SPECIFIED, DIMENSIONS
ARE IN INCHES AND TOLERANCES ARE

TWO PLACE DECIMAL +/- .05	THREE PLACE DECIMAL +/- .020	ANGLES +/-
---------------------------------	------------------------------------	---------------

DO NOT SCALE DRAWING

CHECKED	J. COOPER	DATE 04/13/2023
APPROVED	J. COOPER	DATE 04/13/2023

MARLIN TECHNOLOGIES INC.

TITLE
OUTLINE, 505650
ISOLATED CAN BRIDGE MODULE

SIZE B	DRAWING NUMBER 013743	TYPE O	REV B
DRAWN	MBP	DATE 07/14/21	SHEET 1 OF 1

THE INFORMATION CONTAINED ON THIS
DRAWING IS PROPRIETARY AND CONFIDENTIAL
TO MARLIN TECHNOLOGIES INC. UNAUTHORIZED
USE OR DISTRIBUTION WITHOUT CONSENT IS
PROHIBITED.