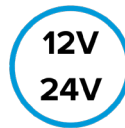


LEGEND SERIES 5PB KEYPAD

The M-Flex Legend Series Keypads have relegendable keycaps and are designed for severe duty, outdoor mobile applications and are built to withstand the harsh temperatures, shock and vibration, moisture and electrical transients that are common to these environments.



M-Flex
KEYPADS



FEATURES



Relegendable keycaps.
Standard and custom icons.



Four RGB LED indicators for
brighter illumination and full
color control.



Deutsch DT style connectors.



Tactile Buttons with actuation
feedback.



Vertical or horizontal mount.



Compatible with Marlin Digital
Switchers and IO Controllers
and virtually any other CAN
Bus systems.



CAN protocol J1939,
CANopen, NMEA 2000.



On/off, momentary, toggle scroll/
step functions for each key.

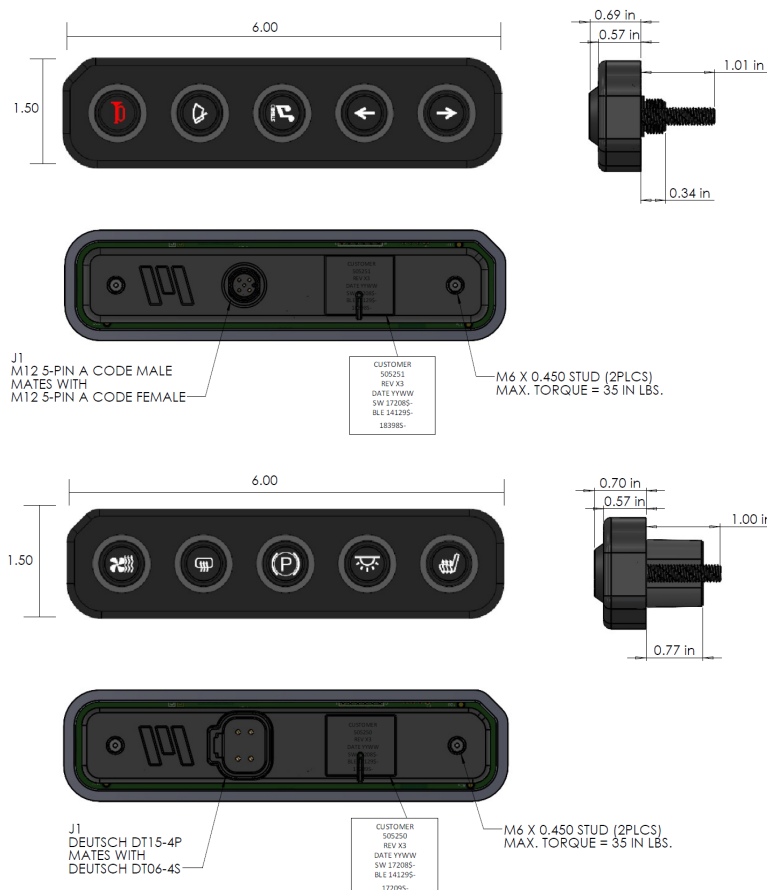


Optional Bluetooth connectivity.

SPECIFICATIONS

| | |
|-----------------------|--|
| Supply Voltage | 9 – 32VDC . |
| Max Current | 1A @ 12VDC. |
| CAN Protocol | J1939, CANopen, NMEA 2000. |
| Baud Rate | 250, 500, 1000 kbps. |
| Switch Backlighting | Dimmable color LED backlighting on switches; intensity controlled via CAN message. |
| Actuation | Snap dome contacts operate at 340 grams of force. |
| Connector | Deutsch DT04-4P and M12. |
| Mounting | (2) #10-32 bolt; 35 in. lbs torque. |
| Ingress Protection | IP67. |
| Operating Temperature | -40° to 85°C (-40° to 185°F). |
| Storage Temperature | -40° to 85°C (-40° to 185°F). |
| Enclosure | PC PBT alloy plastic resin. |

DIMENSIONS



For a detailed specification visit
marlintech.com

Marlin Technologies, Inc.
101 Industrial Drive | P.O. Box 123
Horicon, WI 53032-1803
920.485.4463 | P
920.485.2899 | F

MADE IN THE
USA
OF IMPORTED MATERIALS