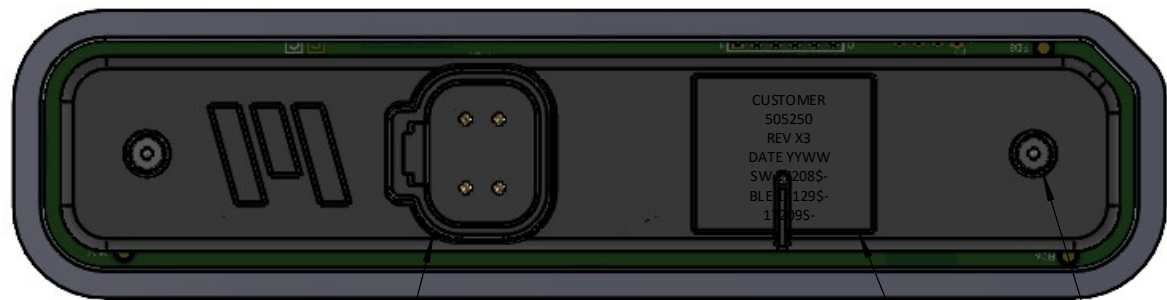


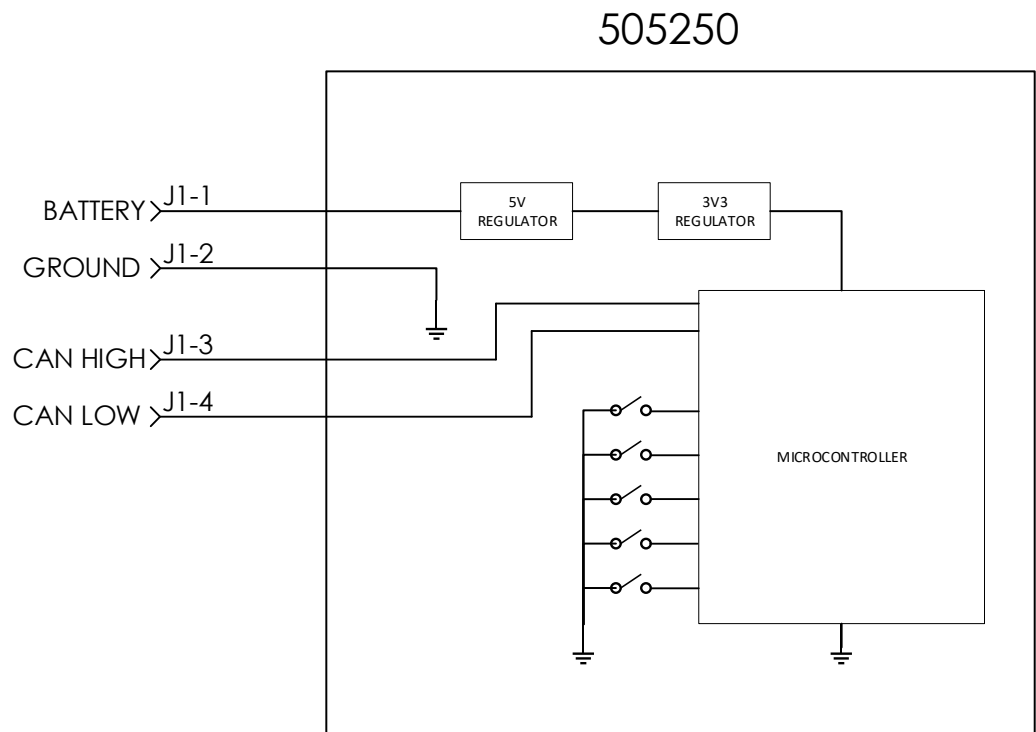
REVISIONS				
REV	DATE	ECN	DESCRIPTION	APVD
A	10/4/21	17200	RELEASE TO PRODUCTION	



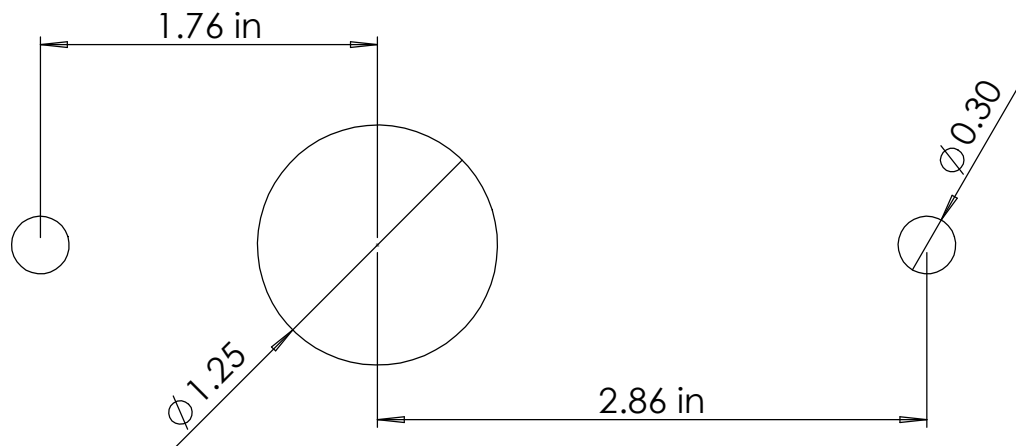
J1
DEUTSCH DT15-4P
MATES WITH
DEUTSCH DT06-4S

CUSTOMER
505250
REV X3
DATE YYWW
SW 17208\$-
BLE 14129\$-
17209S-

M6 X 0.450 STUD (2PLCS)
MAX. TORQUE = 35 IN LBS.

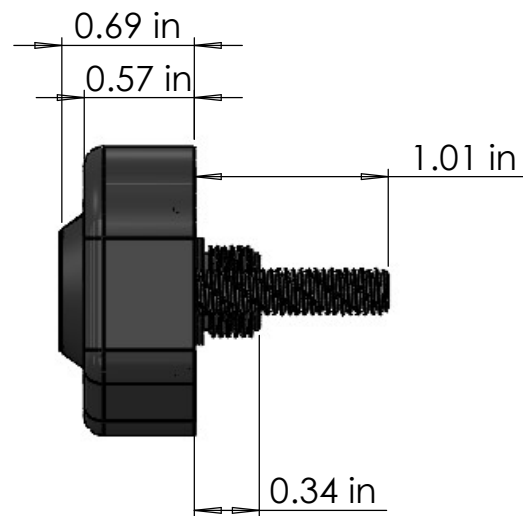


RECOMMENDED CUTOUT

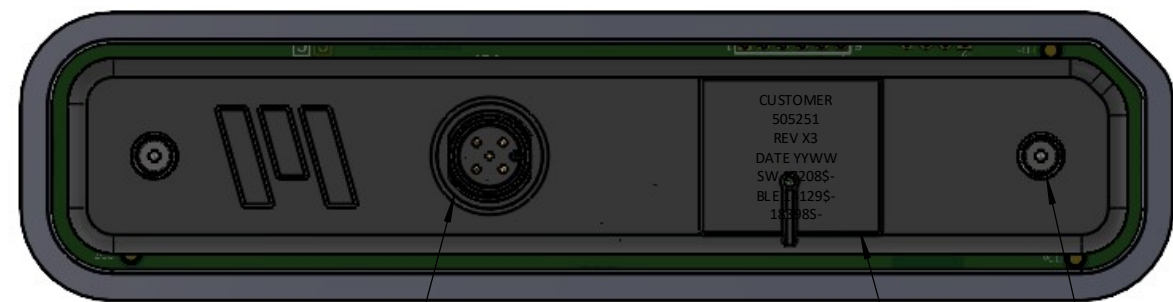


THE INFORMATION CONTAINED ON THIS
DRAWING IS PROPRIETARY AND CONFIDENTIAL
TO MARLIN TECHNOLOGIES INC.
UNAUTHORIZED USE OR DISTRIBUTION WITHOUT
CONSENT IS PROHIBITED.

UNLESS OTHERWISE SPECIFIED, DIMENSIONS ARE IN INCHES AND TOLERANCES ARE			MARLIN TECHNOLOGIES INC.			
TWO PLACE DECIMAL	THREE PLACE DECIMAL	ANGLES	TITLE OUTLINE, 505250 5PB LEGEND KEYPAD			
+/- 0.01	+/- 0.005	+/- 0.5°				
DO NOT SCALE DRAWING			SIZE	DRAWING NUMBER	TYPE	REV
			B	017202	O	X3
CHECKED	DATE					
APPROVED	DATE	DRAWN: JPO	DATE: 1/13/2025		SHEET 1 OF 1	



REVISIONS				
REV	DATE	ECN	DESCRIPTION	APVD
A	2/21/25	18400	RELEASE TO PRODUCTION	

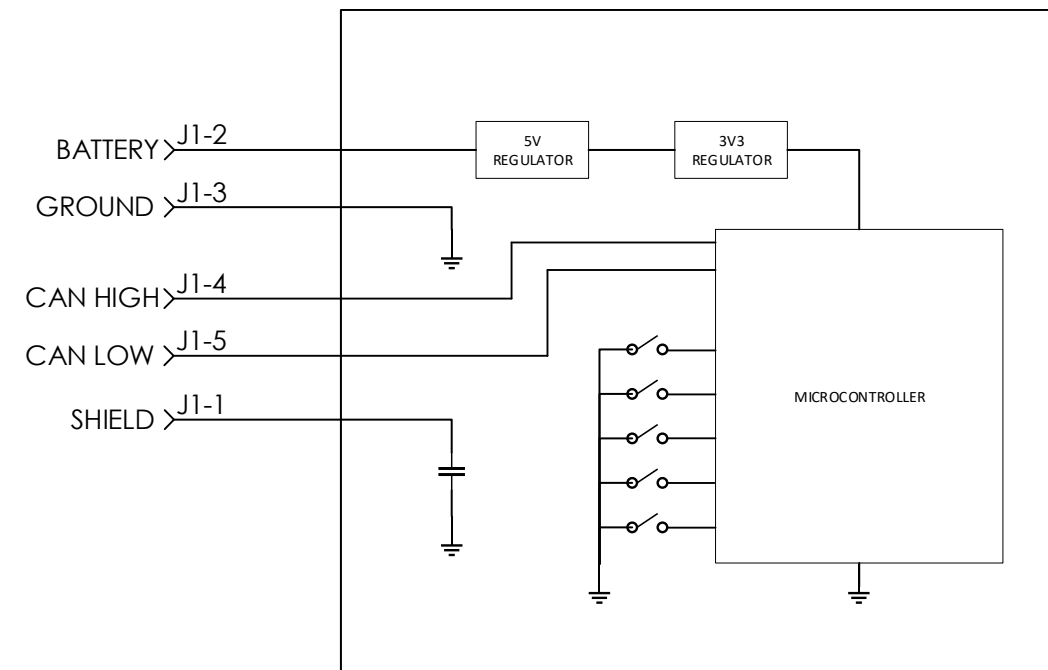


J1
M12 5-PIN A CODE MALE
MATES WITH
M12 5-PIN A CODE FEMALE

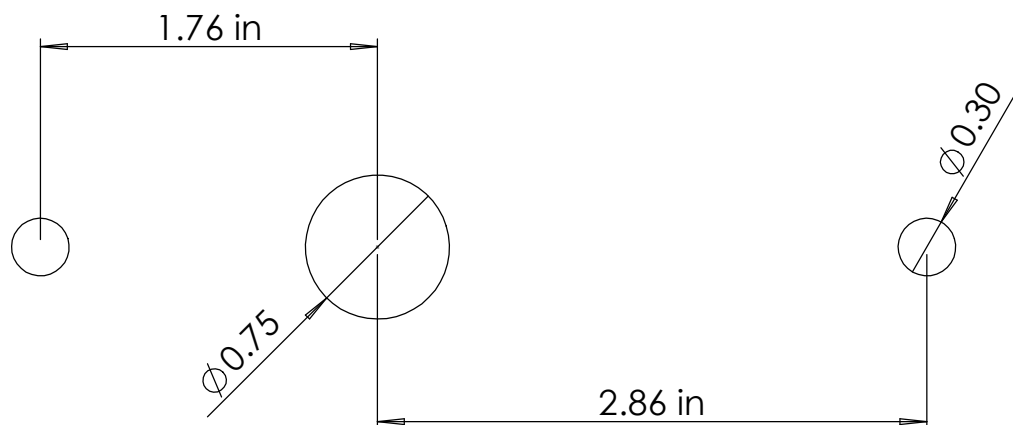
CUSTOMER
505251
REV X3
DATE YYWW
SW 17208\$-
BLE 14129\$-
18398\$-

M6 X 0.450 STUD (2PLCS)
MAX. TORQUE = 35 IN LBS.

505251



RECOMMENDED CUTOUT



THE INFORMATION CONTAINED ON THIS
DRAWING IS PROPRIETARY AND CONFIDENTIAL
TO MARLIN TECHNOLOGIES INC.
UNAUTHORIZED USE OR DISTRIBUTION WITHOUT
CONSENT IS PROHIBITED.

UNLESS OTHERWISE SPECIFIED, DIMENSIONS ARE IN INCHES AND TOLERANCES ARE			MARLIN TECHNOLOGIES INC.			
TWO PLACE DECIMAL	THREE PLACE DECIMAL	ANGLES	TITLE			
+/- 0.01	+/- 0.005	+/- 0.5°	OUTLINE, 505251 5PB LEGEND KEYPAD			
DO NOT SCALE DRAWING			SIZE	DRAWING NUMBER	TYPE	REV
CHECKED		DATE	B	018394	O	X3
APPROVED	DATE	DRAWN: JPO		DATE: 3/12/2025	SHEET 1 OF 1	