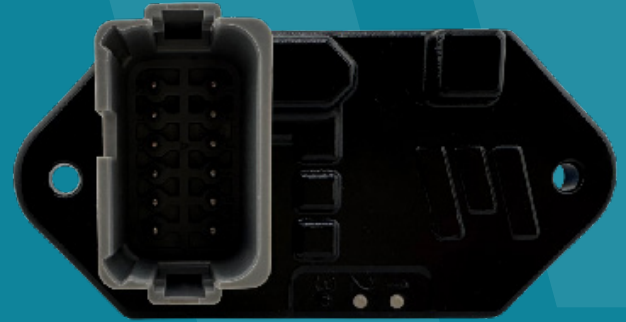


# M-FLEX LINK CAN BRIDGE 2 CH

This more powerful version of our CAN Bridge has been updated with more resources to allow for up to 64 filters, each one either blocking or passing messages based on criteria you set. It also allows connecting two buses that may operate at different baud rates.



**M-Flex**  
CAN BRIDGES

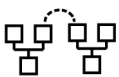
IP67

12V  
24V

RoHS  
Compliant



## FEATURES



Two CAN bus channels for bridging between two networks.



64 filters per channel to pass or block messages



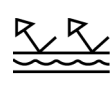
Connects two CAN Buses, sharing only desired messages thereby reducing bus loads to targeted levels.



250/500/1000 kbps CAN bus speeds.



Deutsch DT style connectors.



Fully encapsulated electronics for complete environmental protection.



User configurable via Marlin's Programming Tool, allowing for flexible use cases for a wide range of applications.



Two diagnostic LEDs for CAN bus power and communication status.



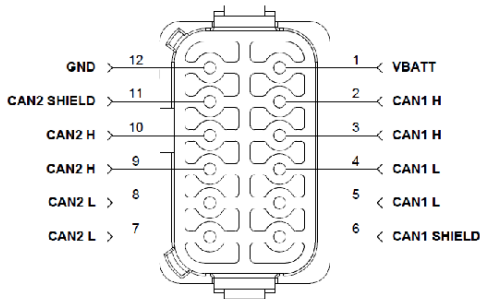
Custom software capabilities allow for specialized application development.

## SPECIFICATIONS

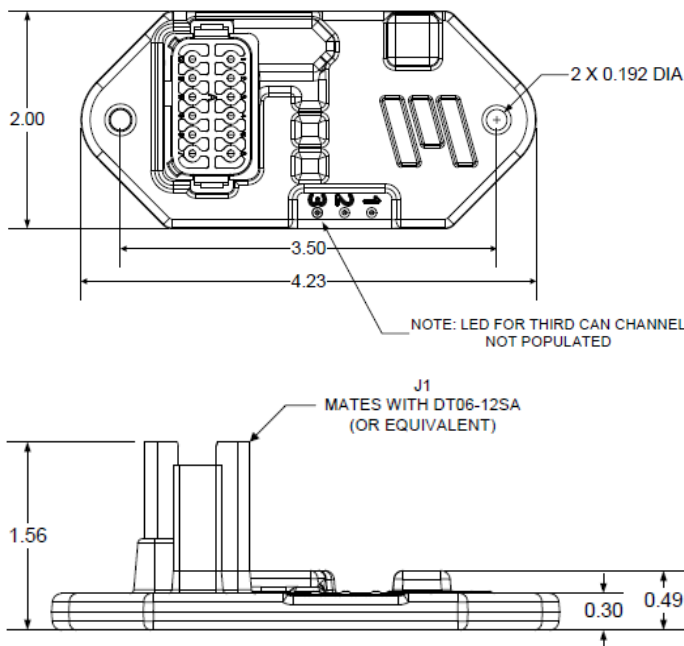
Specifications subject to change without notice. \ Revised 03.26

<b>Supply Voltage</b>	9-36VDC operating range (12VDC or 24VDC nominal) with reverse polarity protection.
<b>Protocol</b>	Support for Standard (11-bit) and Extended (29-bit) messages and filters)
<b>Baud Rate</b>	250/500/1000 Kbps.
<b>CAN Channels</b>	2 Channel bridge for connecting 2 CAN bus networks.
<b>Configuration Interface</b>	Module settings and filters configurable via. the Marlin Programming Tool
<b>Packaging</b>	Polymer housing with integral mounting tabs, electronics fully encapsulated.
<b>Connector</b>	Deutsch DT15-12PA or Equivalent.
<b>Mounting</b>	Screw Mount M4/M4.5/8-32 Screws.

## CONNECTIONS



## DIMENSIONS



For a detailed specification visit [marlintech.com](http://marlintech.com)

Marlin Technologies, Inc.  
101 Industrial Drive  
Horicon, WI 53032-1803  
920.485.4463 \ P

**MARLINTECH.COM**  
MADE IN THE USA WITH  
IMPORTED MATERIALS